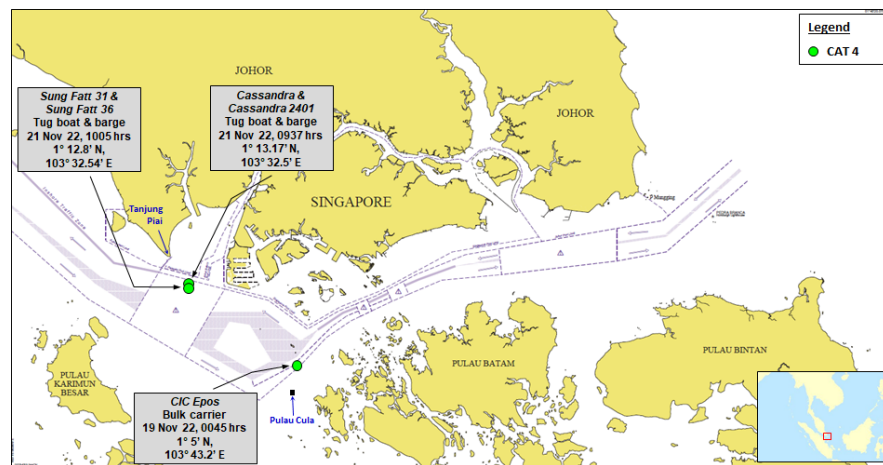


OVERVIEW

Three incidents of armed robbery against ships (all CAT 4¹ incidents) in Asia were reported. All three incidents occurred in the Singapore Strait (SS). Of the three incidents, two incidents occurred on board barges towed by tug boats off Tanjung Piai, Malaysia while underway in the westbound lane of Traffic Separation Scheme (TSS) in the SS and one incident occurred on board a bulk carrier while underway in the eastbound lane of TSS in the SS. Details of incidents are shown in table (*).



Factors	Location		
	Eastbound lane of TSS	Westbound lane of TSS	
	Approximately 3 nm north of Pulau Cula, Indonesia (1 incident)	Approximately 3.25 nm southeast of Tanjung Piai, Malaysia (1 incident)	Approximately 3.57 nm southeast of Tanjung Piai, Malaysia (1 incident)
Type of ship	Bulk carrier	Tug boat and barge	Tug boat and barge
Date/time	19 Nov at 0045 hrs	21 Nov at 0937 hrs	21 Nov at 1005 hrs
Number of perpetrators	5 men	Three small boats / 9 men	Five small boats / 14 men
Weapons	None	Not stated	Not stated
Treatment of crew	No injuries	No injuries	No injuries
Significance level	CAT 4	CAT 4	CAT 4
Items stolen	Nothing was stolen	Scrap metals were stolen	Scrap metals were stolen

AREAS OF CONCERN

With the three incidents, a total of 48 incidents were reported in the SS since January 2022. The ReCAAP ISC is concerned with the continued occurrence of incidents in the SS. An Incident Alert (IA 05/2022) was issued on 21 Nov 22 to advise all ships to intensify vigilance when transiting the area, and urge littoral States to increase patrols and enforcement. The IA can be found at www.recaap.org.

SITUATION OF ABDUCTION OF CREW IN THE SULU-CELEBES SEAS AND WATERS OFF EASTERN SABAH

Downgrading of threat level

- The Philippine Coast Guard (PCG), after careful consideration of inputs from stakeholders and counterparts with vital involvement in securing the Sulu-Celebes Seas maritime security measure, recommends the downgrading of the threat on the 'Abduction of Crew for ransom in the Sulu-Celebes Seas' from 'POTENTIALLY HIGH' to 'MODERATE'. The MODERATE threat level implies that **'Incidents are possible to occur but are relatively less severe in nature'**.

Update of ReCAAP ISC Advisory

- As the threat of abduction of crew in the Sulu-Celebes Seas has diminished since January 2020 due to successful military operations and robust law enforcement initiatives, the ReCAAP ISC updates its Advisory to all ships to **consider re-route from the area as an option based on its prerogative**.
- For ships transiting the area, the **ship masters and crew are strongly encouraged to exercise extra vigilance and report** all incidents immediately to the Operation Centres of the Philippines and Eastern Sabah Security Command (ESSCOM) of Malaysia. The **Contact Details** of the Operation Centres of the Philippines and ESSCOM of Malaysia are as shown in Picture 1.



Picture 1

RECOMMENDATIONS

Ship master and crew are to report all incidents of piracy and armed robbery against ships to the nearest coastal State and flag State, exercise vigilance and adopt appropriate preventive measures taking reference from the *Regional Guide 2 to Counter Piracy and Armed Robbery Against Ships in Asia*.

Follow us on: W: www.recaap.org Twitter: @recaapisc

Contact us at: E: info@recaap.org T: +65 6376 3063 F: +65 6376 3066

* Table at <https://www.recaap.org/resources/ck/files/Number%20of%20Incidents/2022/List%20of%20Incidents%20for%202022.pdf> for details of the incidents.

¹ CAT (Category) 4 incident is classified as "least significant" in nature. Under this category, the perpetrators were not armed, and the crew not harmed.