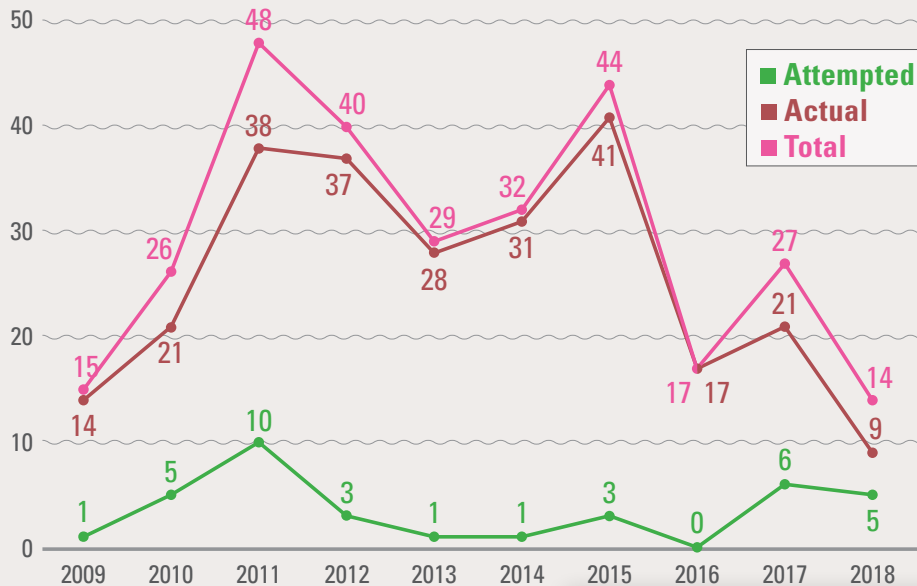


PIRACY AND ARMED ROBBERY AGAINST SHIPS IN ASIA

JANUARY-MARCH 2018 (Q1)

NUMBER OF INCIDENTS

January - March (2009-2018)



PIRACY

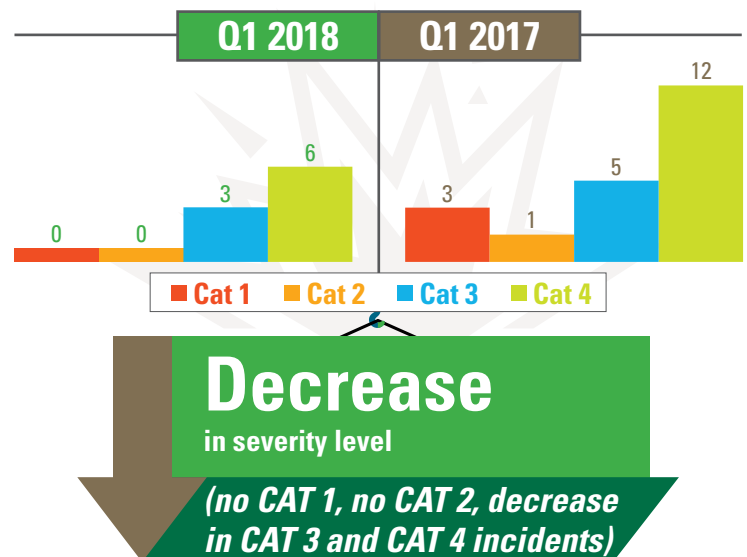
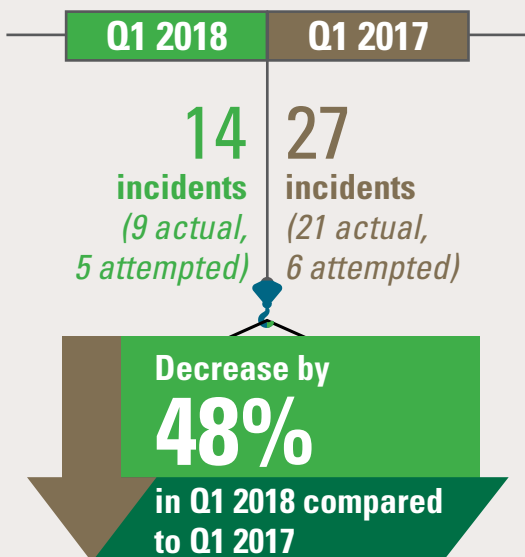
1 incident
(1 actual)

ARMED ROBBERY AGAINST SHIPS

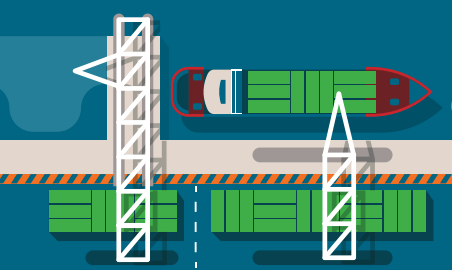
13 incidents
(8 actual, 5 attempted)

Mostly are robbery and theft at ports & anchorages

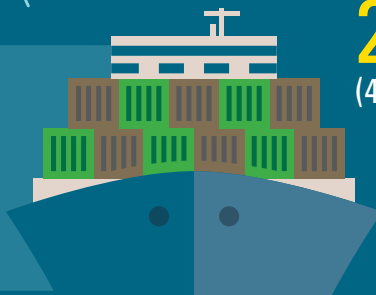
SEVERITY OF INCIDENTS



STATUS OF SHIPS IN Q1 2018



71% anchor/
berth
(10 of 14)



29% underway
(4 of 14)



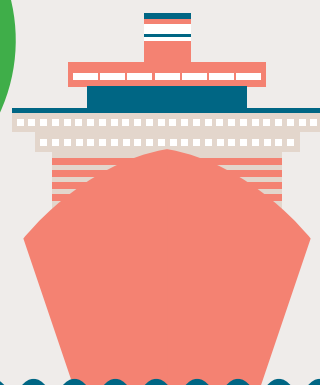
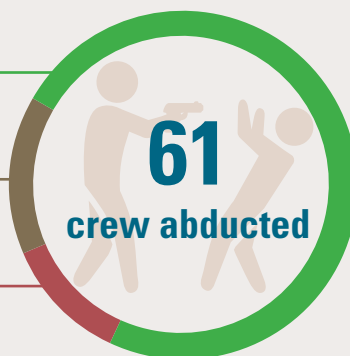
ABDUCTION OF CREW FOR RANSOM IN SULU-CELEBES SEA

- One attempted incident in 2018 (Jan-Mar)
- Between March 2016 and March 2018, **15 incidents** with...

45 Released/ Rescued

9 Still in Captivity

7 Killed



- ReCAAP ISC maintains Advisory to ships:
 - > Reroute where possible, otherwise
 - » Exercise enhanced vigilance
 - » Conduct risk assessment
 - » Adopt piracy counter-measures to mitigate risk
 - » Maintain communications with authorities
 - » Make timely report (Reporting Centres in Zamboanga, Bongao, Lahad Datu)

PHILIPPINE COAST GUARD DISTRICT

Southwestern Mindanao
Operation Centre

Zamboanga

Tel: +63 929686 4129 +63 929686 0689

VHF: Channel 16 with call-sign "ENVY"

Email: hcgdswwm@yahoo.com

NAVY - LITTORAL MONITORING STATION (LMS)

Bongao, Tawi-Tawi

Tel: +63 917774 2293

VHF: Channel 16

Email: ointtaskgrouptt@gmail.com

EASTERN SABAH SECURITY COMMAND (ESSCOM)

Lahad Datu

Tel: +60 89863181/016

Fax: +60 898631812

VHF: Channel 16 with call-sign
"ESSCOM"

Email: bilikgerakanesscom@jpm.gov.my

CONCLUSION

Overall situation of piracy and armed robbery against ships in Q1 2018 improved compared to Q1 2017.

- Number of incidents in Q1 2018 decrease by 48% compared to Q1 2017.
- Incidents in Q1 2018 relatively less severe compared to Q1 2017. No CAT 1 and CAT 2 in Q1 2018.

There are improvements at ports/ anchorages in Bangladesh and Philippines, no actual abduction of crew and no hijacking of ship for theft of oil cargo.

The ReCAAP ISC advises ships transiting the areas of concern to exercise enhanced vigilance, maintain look-out for suspicious approach by boats, report all incidents to the nearest coastal State and flag State immediately, keep abreast of the latest situation and implement preventive measures recommended in the *Regional Guide to Counter Piracy and Armed Robbery against Ships in Asia*.

