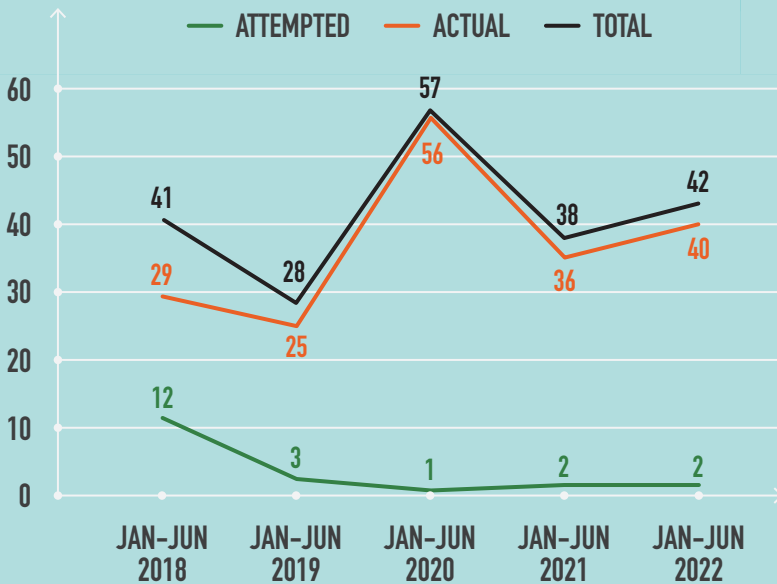




PIRACY AND ARMED ROBBERY AGAINST SHIPS IN ASIA

JANUARY-JUNE 2022



42 TOTAL INCIDENTS
All armed robbery against ships, no piracy incident

40 ACTUAL INCIDENTS **2 ATTEMPTED INCIDENTS**

11% INCREASE IN TOTAL INCIDENTS
Compared to Jan-Jun 2021

STATUS OF SHIPS

29% **12 INCIDENTS**
on board ships at anchor/berth

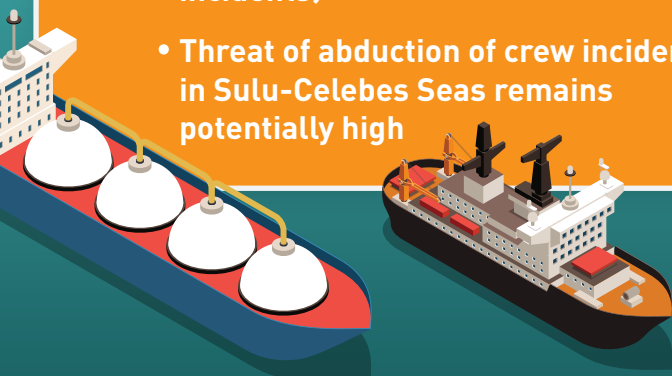
71% **30 INCIDENTS**
on board ships while underway

JAN-JUN 2022 COMPARED TO JAN-JUN 2021

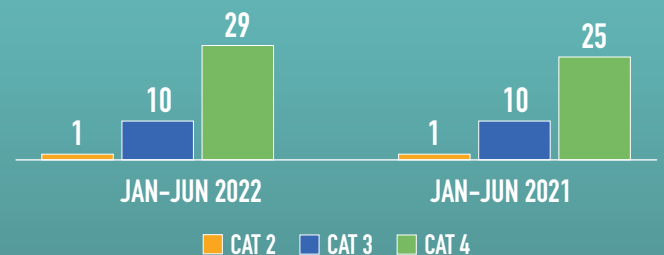
OF CONCERN



- Continued occurrence of incidents in Singapore Strait (27 incidents vs 20 incidents)
- Threat of abduction of crew incidents in Sulu-Celebes Seas remains potentially high

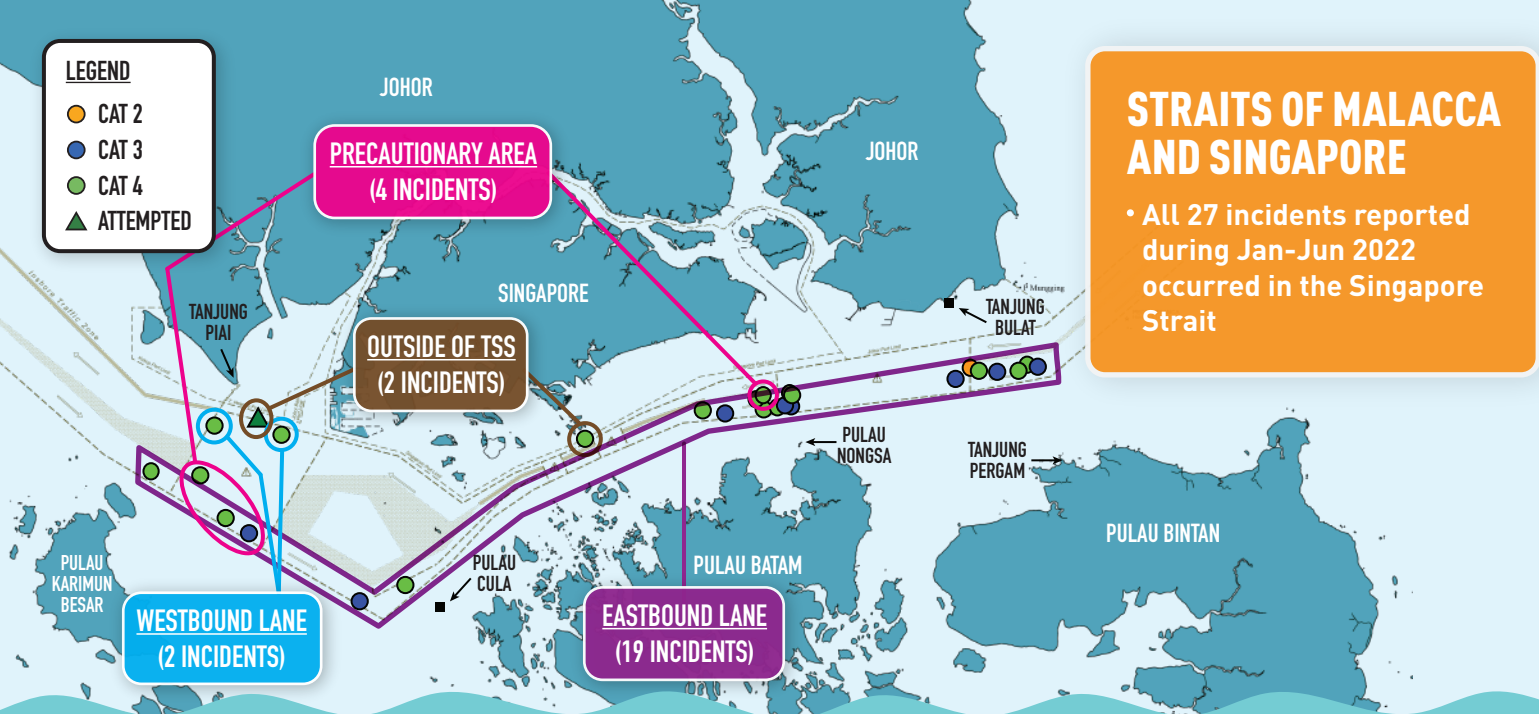


SEVERITY OF INCIDENTS



MAJORITY OF INCIDENTS
during Jan-Jun 2022 were CAT 4 incidents (perpetrators not armed and crew not harmed)

73%



RECOMMENDATIONS



LITTORAL STATES

- To increase surveillance and enforcement
- Respond promptly to incidents
- Strengthen coordination and promote information sharing
- Arrest and prosecute perpetrators

SHIP MASTER AND CREW

- Keep abreast of latest situation (www.recaap.org), tune-in to advisories and navigational broadcasts
- Maximise vigilance and lookouts
- Report all incidents to nearest coastal State and flag State immediately
- Sound alarm when sighted unauthorised persons on board ship or suspicious boats in vicinity

ABDUCTION OF CREW IN SULU-CELEBES SEAS AND WATERS OFF EASTERN SABAH



No abduction of crew incident reported during January-June 2022



Last known incident occurred in January 2020



No crew is held in captivity (as of 30 June 2022)

ADVISORY AND GUIDANCE

- Threat of abduction of crew remains potentially high
- ReCAAP ISC Advisory to ships to re-route where possible, otherwise:
 - Exercise enhanced vigilance
 - Adopt piracy countermeasures to mitigate risk
 - Maintain communications with authorities
 - Make timely report to national reporting centres of Philippines and Malaysia
- Refer to *Guidance on Abduction of Crew in the Sulu-Celebes Seas and Waters off Eastern Sabah*

