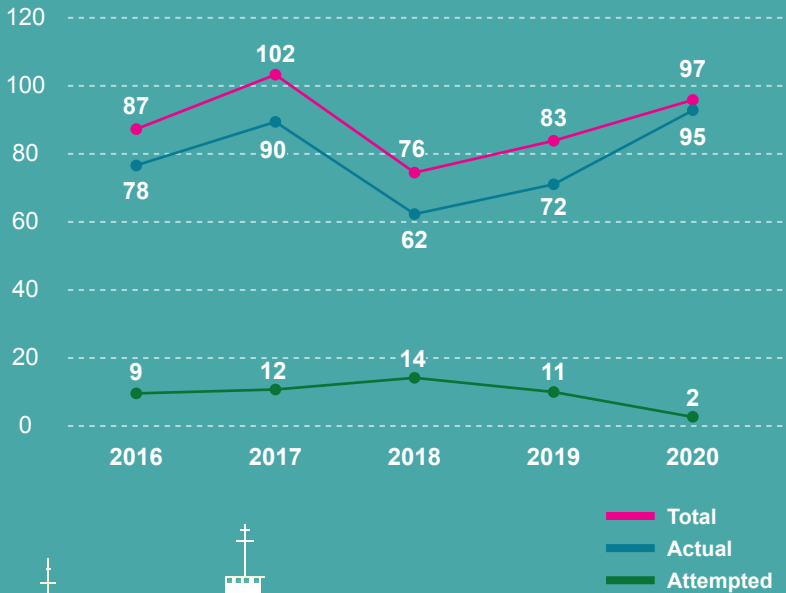


PIRACY AND ARMED ROBBERY AGAINST SHIPS IN ASIA (2020)

NUMBER OF INCIDENTS (2016-2020)



17% INCREASE
in total number of incidents, compared to 2019

32% INCREASE
of actual incidents, compared to 2019

SEVERITY OF INCIDENTS

1 X CAT 1

- abduction of crew
- 1 incident decrease from 2019

6 X CAT 2

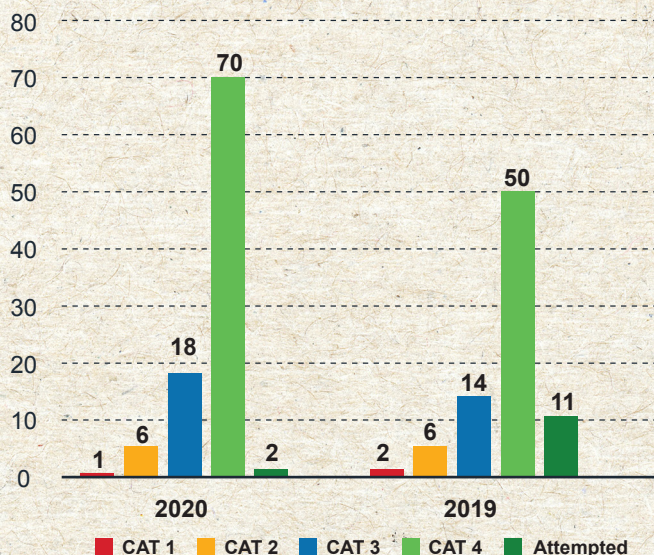
- same as 2019 and lowest number during 2007-2020

18 X CAT 3

- increase of 4 incidents from 2019

70 X CAT 4

- 74% of the total incidents



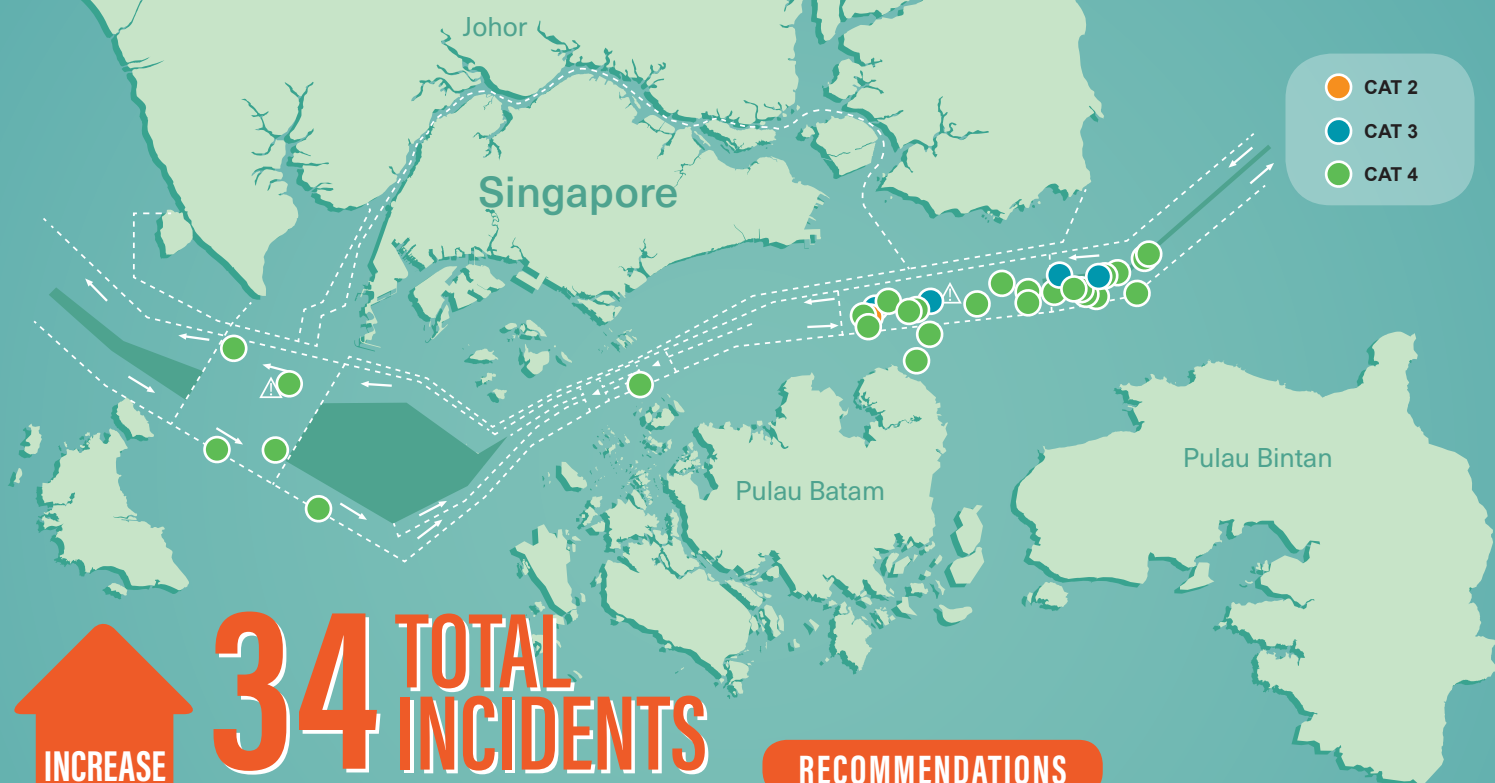
INCREASE IN INCIDENTS

- Mostly at anchorages/ports in **Bangladesh, India, the Philippines and Vietnam**
- Mostly while underway in the **South China Sea and Singapore Strait**

IMPROVEMENTS

- Anchorages in **China and Malaysia**
- Abduction of crew incident (1 incident in 2020 vs 2 incidents in 2019)

SITUATION IN THE SINGAPORE STRAIT



INCREASE
of **3**
incidents,
compared
to 2019

34 TOTAL INCIDENTS

- 30 occurred in eastbound lane of Traffic Separation Scheme (TSS)
- 2 precautionary area
- 1 westbound lane of TSS
- 1 just outside (south) of TSS

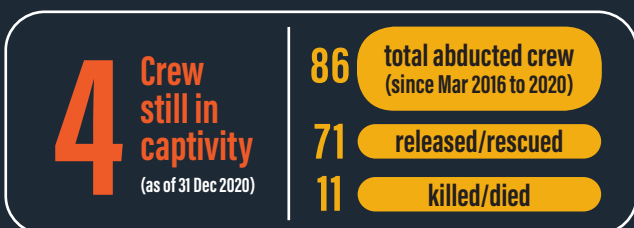
RECOMMENDATIONS

- Littoral States to increase patrols and enforcement
- Strengthen cooperation and coordination, and promote information sharing among littoral States
- Ships to exercise enhanced vigilance and report all incidents to nearest coastal State immediately

ABDUCTION OF CREW IN SULU-CELEBES SEAS AND WATERS OFF EASTERN SABAH

- On 17 Jan, 1 incident of abduction of crew from fishing trawler (5 crew abducted)
- On 29 Sep, the body of one of the abducted crew was found, 4 crew still held in captivity

Status of abducted crew (as of 31 Dec 20)



Efforts by authorities

- Military operations and neutralisation of ASG members by Philippine authorities
- Arrest of Abu Sayyaf Group (ASG) members by Malaysian authorities

WARNING AND ADVISORY

Risk of abduction of crew is high

Information of planned kidnapping in Sabah and Semporna, Malaysia targeting crew of ships passing by Tawi-Tawi and Sabah waters

ReCAAP ISC Advisory to ships to re-route where possible, otherwise:

- Exercise enhanced vigilance
- Adopt piracy countermeasures to mitigate risk
- Maintain comms with authorities
- Make timely report to national reporting centres

Refer to *Guidance on the Abduction of Crew in the Sulu-Celebes Seas and Waters off Eastern Sabah*

