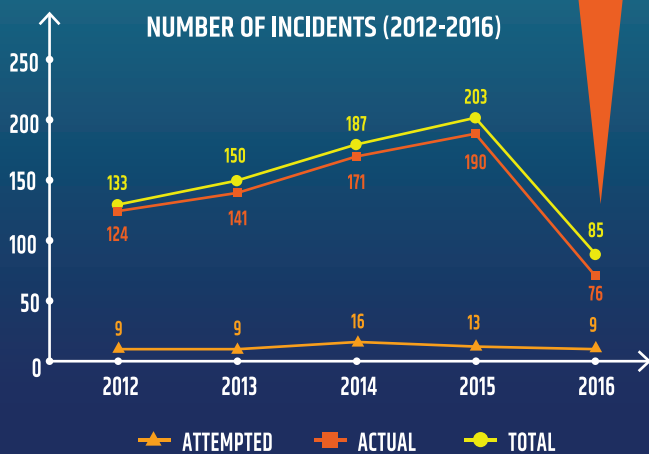


# PIRACY AND ARMED ROBBERY AGAINST SHIPS IN ASIA (2016)

## LOWEST NUMBER OF INCIDENTS YEAR-ON-YEAR (2012-2016)

**58% DROP** in number of incidents compared to 2015

**85 INCIDENTS, 5 ARE PIRACY AND 80 ARE ARMED ROBBERY AGAINST SHIPS**



## SEVERITY OF INCIDENTS (ACTUAL INCIDENTS)

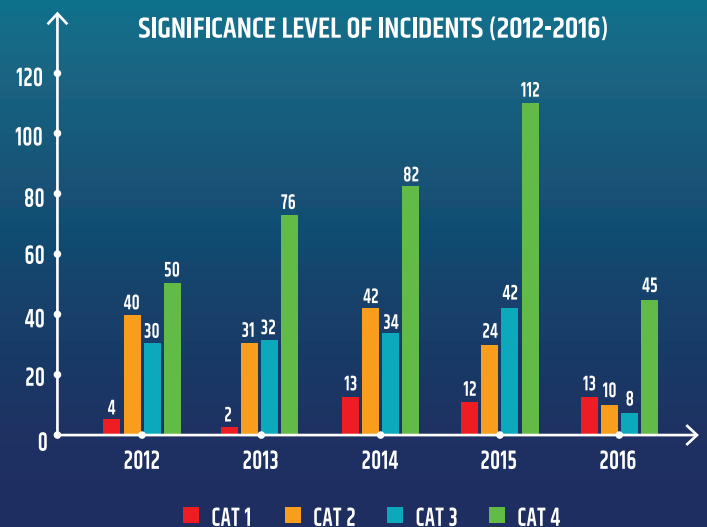
### INCREASE

**CAT 1** (most significant incident)  
**13 in 2016 (12 in 2015)**  
**10** abduction of crew  
**3** theft of oil cargo

### DECREASE

**CAT 2, 3 and 4 incidents**

## SIGNIFICANCE LEVEL OF INCIDENTS (2012-2016)



## IMPROVEMENTS



### STRAITS OF MALACCA AND SINGAPORE (SOMS)

**Most Drastic Decrease** 104 cases in 2015 to 2 cases in 2016

- Arrest of perpetrators
- Joint coordinated patrol & surveillance by littoral States



### HIJACKING OF SHIPS FOR THEFT OF OIL CARGO

**Decrease** 12 cases in 2015 to 3 cases in 2016

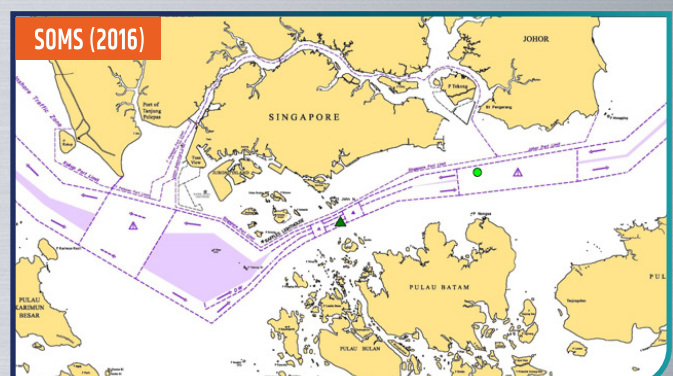
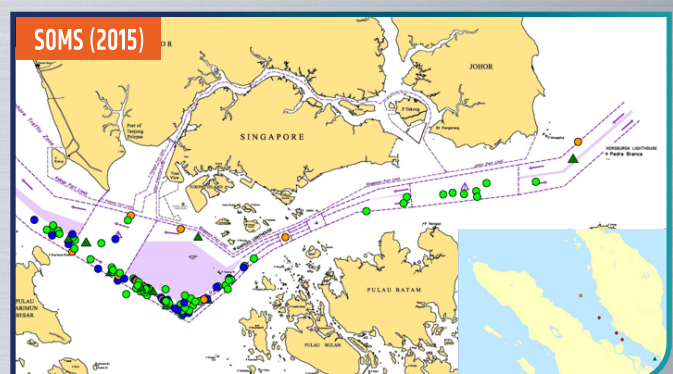
- Commitment by littoral States to clamp down crime
- Arrest of head of syndicates in 2015



### PORTS/ANCHORAGES IN VIETNAM

**Decrease** 27 cases in 2015 to 9 cases in 2016

- Concerted efforts by Vietnamese authorities
- Vigilance by master and crew



# SERIOUS CONCERN

**ABDUCTION OF CREW FOR RANSOM IN SULU-CELEBES SEA AND WATERS OFF EASTERN SABAH SINCE MARCH 2016:**

**10 ACTUAL INCIDENTS**  
**WITH ABDUCTION OF 48 CREW**  
(33 released and 15 still in captivity)

**6 ATTEMPTED INCIDENTS**



SABAH

SULU SEA

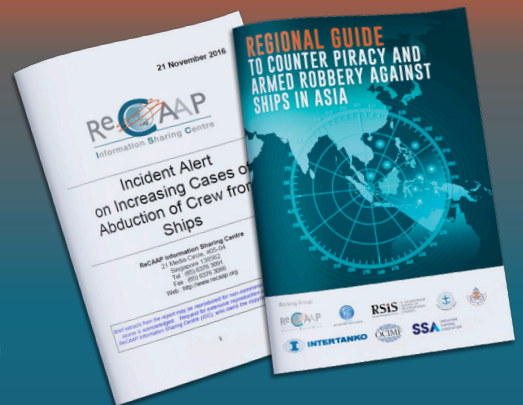
CELEBES SEA

## ACTIONS BY ReCAAP ISC

- Published 2 x Special Reports on modus operandi of abductors in consultation with Philippine Coast Guard, Focal Point for Philippines
- Issued **Incident Alert** dated 21 November 2016: advise industry to re-route (where possible), to report, to exercise extra vigilance, to adopt anti-piracy measures from Regional Guide for Asia

## RESPONSES BY OTHERS

- Advisories issued by US Maritime Administration (MARAD), Japanese Foreign Ministry, MRCC (Mumbai) India Coast Guard, UK Department of Transport



## CONCLUSION

- ◆ Lowest number of incidents in 2016 based on year-on-year for 5-year period (2012-2016).
- ◆ 58% decrease in number of incidents compared to 2015.
- ◆ No room for complacency.
  - Of serious concern are the incidents of abduction of crew in Sulu-Celebes Sea and waters off Eastern Sabah.
  - Incidents at certain ports and anchorages in Indonesia have increased.
- ◆ The ReCAAP ISC urges littoral States to step up surveillance, enhance patrols and initiate timely operational responses.
- ◆ The ReCAAP ISC also urges shipping industry to exercise enhanced vigilance, keep abreast of latest situation update by connecting to ReCAAP ISC website and reports, and adopt relevant anti-piracy measures as recommended in the Regional Guide for Asia.