

Incident Alert

Incident Report : 02/2012
Name and Type of Ship : *Diamond Orchid* / Chemical tanker
Date/Time of Incident : 3 Apr 12 at 0423 hrs (local time)
Location of incident : 01° 42.20' N, 101° 27.52' E
Area Description : At anchorage off Dumai Port, Indonesia

Details of Incident

On 3 Apr 12 at or about 0423 hrs (local time), a Singapore-registered chemical tanker, *Diamond Orchid* was anchored at the anchorage off Dumai Port, Indonesia (01° 42.20' N, 101° 27.52' E) when a robber armed with knife boarded the vessel. The duty crew spotted the robber onboard the vessel and raised the alarm to alert all crew. The robber escaped immediately upon hearing the alarm. A security check was conducted thereafter and no item was stolen from the vessel. All crew was reported to be safe.

Reported by

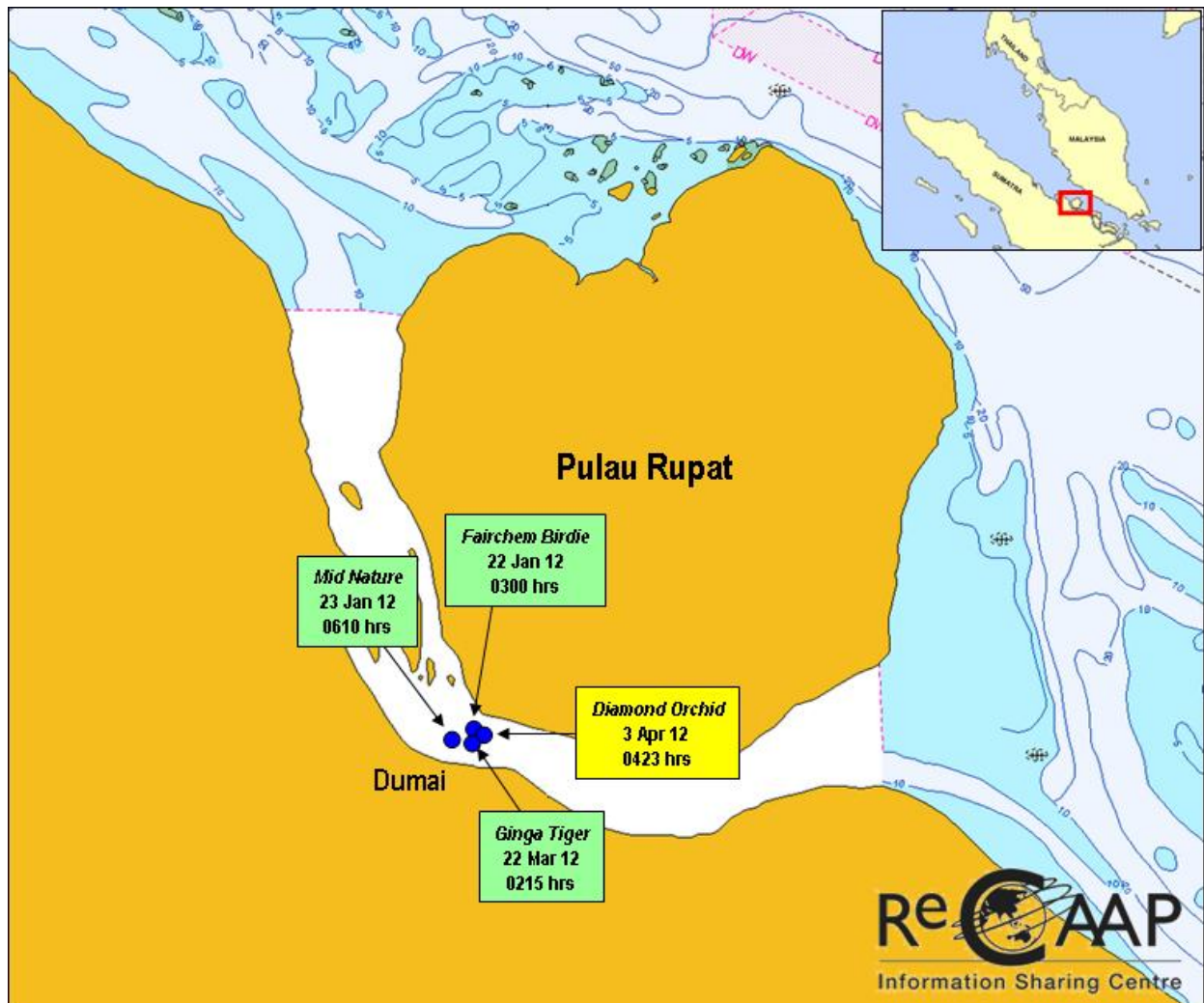
ReCAAP Focal Point (Singapore)

Comments by ReCAAP ISC

There has been an increase in the number of incidents reported at the anchorage and port of Dumai since 2010. Four incidents (comprising three actual and one attempted incidents) were reported in 2010, and this increased to 14 incidents (12 actual and two attempted incidents) in 2011. This works out to about four actual incidents per quarter in 2011.

Between 1 January 2012 and 3 April 2012, a total of four incidents had been reported at the anchorage and port of Dumai. Please refer to the map below on the approximate location of the incidents. In all four incidents, the robbers were armed with knives, and they boarded the vessels between 0200 hrs and 0610 hrs taking advantage of the darkness to mask their presence.





Approximate location of incidents

The ReCAAP ISC advises ship masters and crew to heighten vigilance and deploy extra security watch personnel when anchored at the anchorage and port of Dumai, Indonesia, especially during hours of darkness. The ReCAAP ISC also strongly urges ship masters to report all incidents to the nearest coastal State; and ship owners and operators to report the incident to the ReCAAP Focal Point immediately.

