

Incident Report:	29/2010
Date/Time¹ of Incident:	23 Dec 10 at or about 0340hrs
Location of incident:	1° 11.29' N, 103° 34.47' E
Area Description:	Approximately 5.6 nm southeast of Tanjung Piai, Malaysia
Name and Type of Ship:	<i>Surya Wira 1</i> , Tug boat

Details of Incident

On 23 Dec 10 at or about 0340 hrs, eight robbers armed with pistol and parang (long knives) boarded an Indonesian-registered tug boat, *Surya Wira 1* from a speed boat at approximately 5.6 nm southeast of Tanjung Piai, Malaysia (1° 11.29'N, 103° 34.47' E). *Surya Wira 1* towing barge *Surya Nawa 9* laden with coal, was underway from south of Tanjung Pelepas anchorage to Kuching, east Malaysia at the time of the incident. The robbers took away the crew's belongings including cash, a laptop and mobile phones before escaping. One crew sustained minor abrasion on his hand.

The ship master reported the incident to Singapore's Port Operations Control Centre (POCC) which is also the ReCAAP Focal Point (Singapore). The POCC initiated navigational broadcast on VHF and NAVTEX to alert mariners operating the vicinity, and informed the RCC Jakarta and MRCC Putrajaya about the incident.

Reported by

ReCAAP Focal Point (Singapore)

Comments by ReCAAP ISC

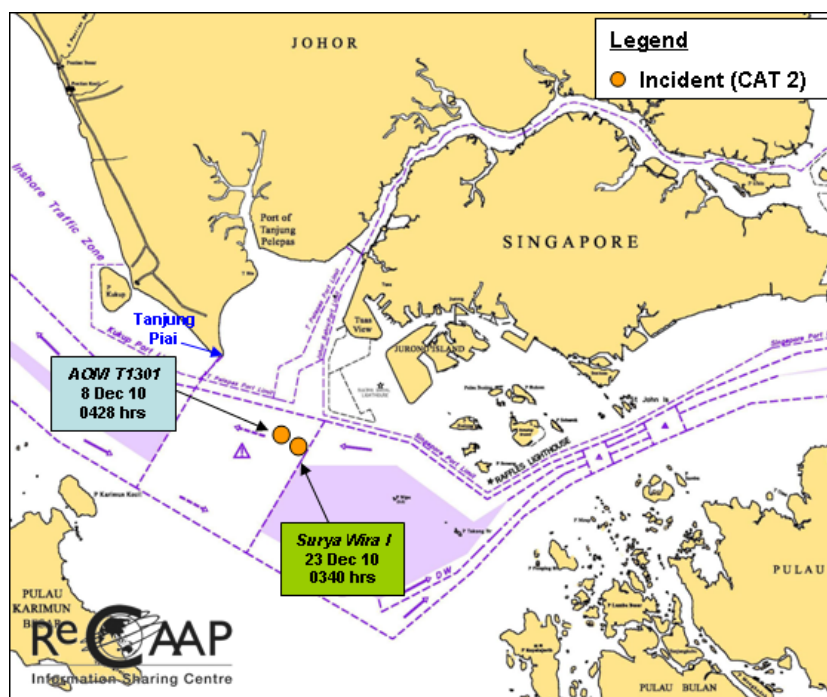
This is the second incident reported in the vicinity of Tanjung Piai, Malaysia (refer chart for approximate location). The previous incident occurred on 8 Dec 10 also involved a tug boat *Aom T1301* towing barge *Sinobest 2505*, underway from Port Klang to Singapore. The incident reported a similar modus operandi carried out by 10

¹ All timings of incidents in this Incident Alert are expressed in local time.



robbers armed with pistols and parangs (long knives) boarded the tug boat and took away the crew's cash and personal belongings before escaping.

The ReCAAP ISC advises ship masters and crew operating in the vicinity to maintain vigilance at all times and take necessary precautionary measures. They are also advised to report all actual and attempted incidents to the coastal State and flag State immediately.



Approximate location of incidents

