

**Incident Report:** 17/2010

**Date/Time of Incident:** 22 Jul 2010 at 0330 hrs (local time)

**Location of incident:** 1° 23.51' N, 104° 30.98' E

**Area Description:** 7.6 nm northeast of Horsburgh Light

**Name and Type of Ship:** *Cape Cosmos* / Bulk Carrier

## Details of Incident

On 22 Jul 2010 at about 0330 hrs (local time), a Cyprus-registered bulk carrier, *Cape Cosmos* was boarded by five men while she was anchored at position 1° 23.51' N, 104° 30.98' E (about 7.6 nm northeast of Horsburgh Lighthouse). The men armed with revolver and knife, came in a speed boat and boarded the bulk carrier using ropes. The duty officer onboard the bulk carrier noticed the robbers and sounded the general alarm. The crew was not injured and nothing was stolen.

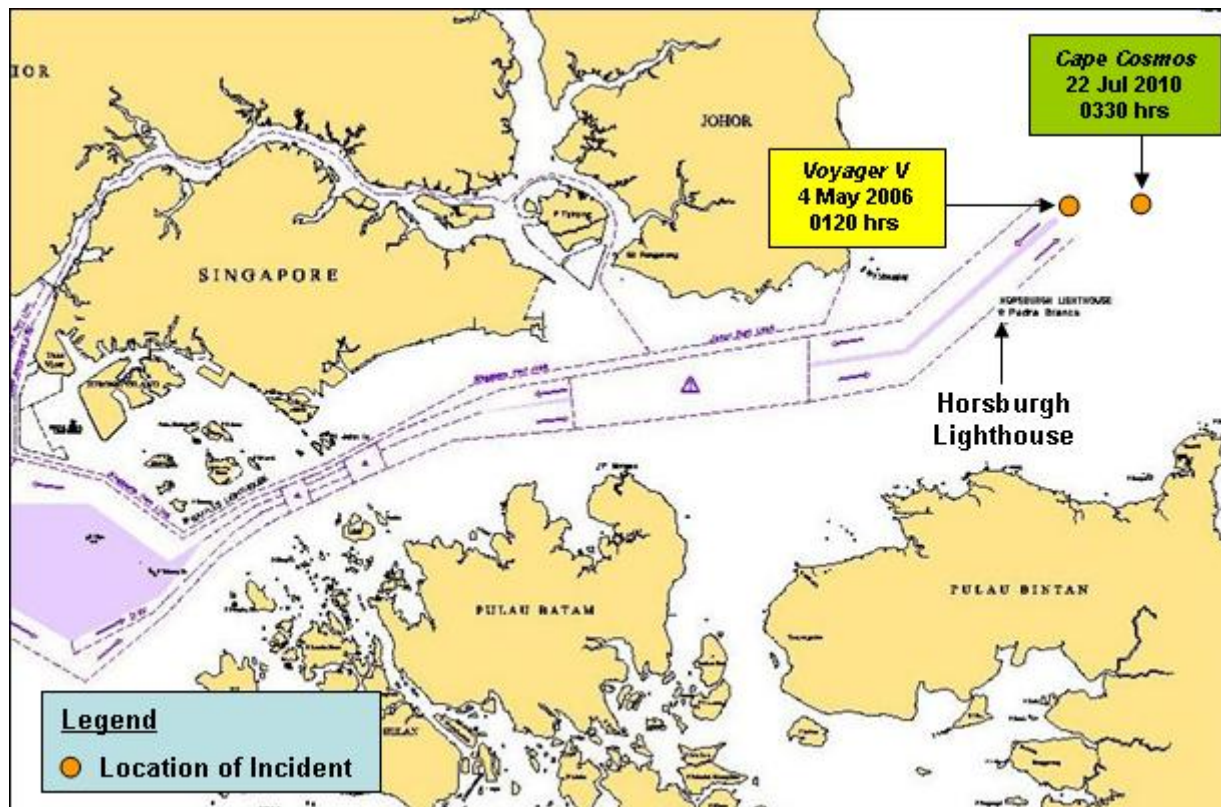
## Reported by

The Singapore's Port Operation and Control Centre (POCC) which is also the ReCAAP Focal Point (Singapore) reported the incident to the ReCAAP ISC, the Republic of Singapore Navy (RSN) and Singapore's Police Coast Guard.

## Past Incident

During the period 2006-2010, this is the second incident reported in the vicinity of Horsburgh Lighthouse. The first incident occurred on 4 May 2006 involving bulk carrier, *Voyager V* at about 5 nm northeast of Horsburgh Lighthouse. During the incident, five robbers onboard a speedboat fired at the bulk carrier while she was underway. Four of the robbers boarded the bulk carrier, broke open the bridge door, tied the crew and escaped with the ship equipment and crew's cash and personal belongings. Refer to map on the approximate location of the incidents.





**Approximate Location of Incidents**

## Comment by the ReCAAP ISC

Ship masters operating in the vicinity are advised to maintain vigilance and take necessary precautionary measures. Early detection of a possible boarding is the most effective deterrent and reduces risk to the crew. The ReCAAP ISC advises ship masters to report all actual incidents and attempted incidents to the nearest coastal State and flag State immediately.

