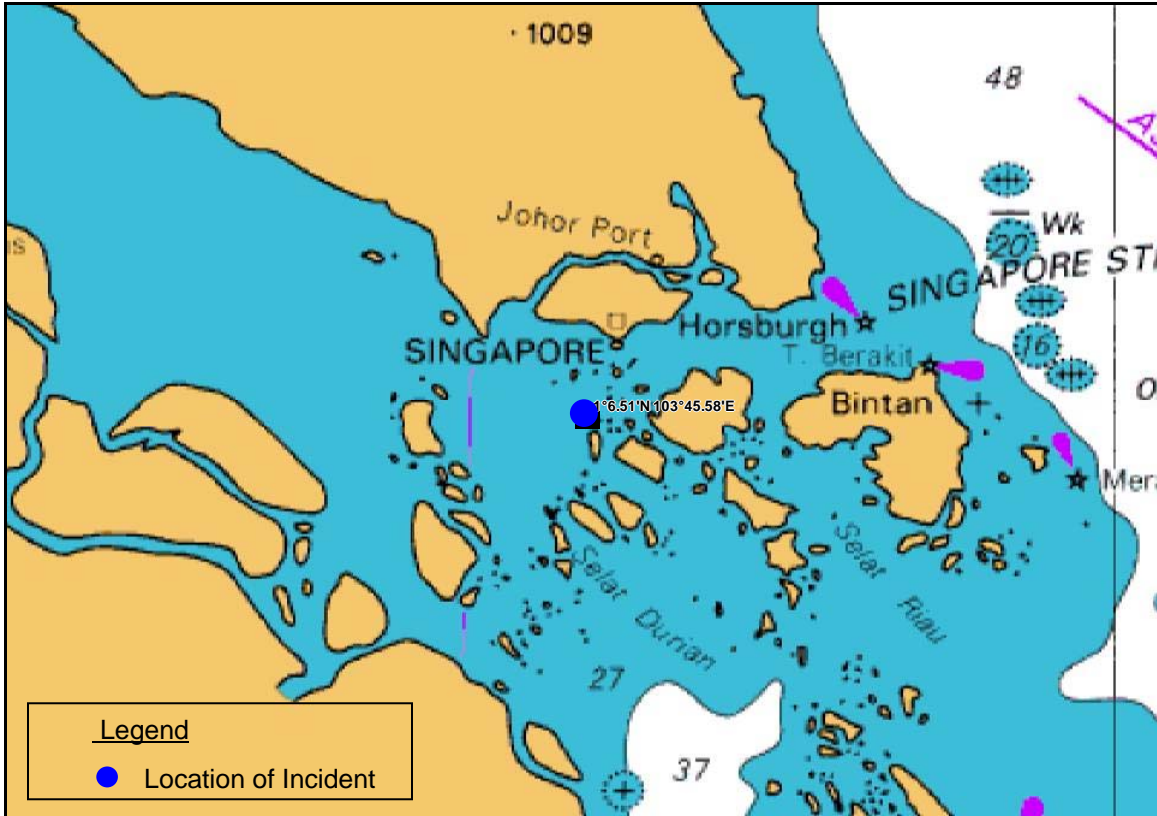


Incident Report :	08/2008
Date/Time of Incident :	27 May 2008 at 0315hrs.
Location of incident :	01° 06.508' N, 103°45. 586' E
Area Description :	Off <i>Helen Mar Reef</i>
Name/Type of Ship:	<i>Cathay 5 & CSF 2301 / Tug & Barge.</i>
<p>Details of Incident :</p> <p>The Singapore-registered tug boat, the <i>Cathay 5</i> towing barge <i>CSF 2301</i> was under way from Lumut to Singapore with cargo of sand on 27 May 2008.</p> <p>Whilst in transit, at 0315 hrs on 27 May 2008, the tug boat was in approximate position 01° 06.508' N, 103° 45.586' E (off <i>Helen Mar Reef</i>) when four robbers armed with small knife and parang boarded the tug boat. (Please refer to map below on the approximate location).</p> <p>The tug master reported that the robbers left the boat at 0347 hrs on 27 May 08 after stealing cash and three mobile phones. No crew was injured.</p> <p>The master reported the incident to the MRCC Indonesia and the flag state. The coastal state activated the NAVTEX broadcast.</p>	
Reported by :	ReCAAP Focal Point (Singapore)
Comments by ISC :	Ship masters are advised to maintain vigilance at all times and take necessary precautionary measures when operating in the vicinity.
Observations by ISC :	The modus operandi of this incident was opportunistic in nature. The robbers boarded the ship undetected, and escaped after stealing cash and mobile phones. They did not harm the crew or cause any damage to the tug/barge.



Approximate Location of Incident